

# ICF-9740W

US Model  
Canadian Model




## FM/AM 2-BAND RADIO


### SPECIFICATIONS

<b>Frequency range:</b>	FM87.5–108 MHz (3.43–2.78m) AM530–1,605 kHz (566–187m)
<b>Antennas:</b>	FM: AC power cord antenna External antenna terminals (75 ohms) AM: Built-in ferrite bar antenna Approx. 16cm (6 <sup>3</sup> / <sub>8</sub> inches) dia.
<b>Speaker:</b>	2W (at 10% harmonic distortion)
<b>Power output:</b>	120V ac, 60 Hz
<b>Power requirements:</b>	Approx. 330x232x136mm (w/h/d) (13x9 <sup>1</sup> / <sub>4</sub> x5 <sup>5</sup> / <sub>8</sub> inches)
<b>Dimensions:</b>	Incl. projecting parts and controls
<b>Weight:</b>	Approx. 2.2kg (4 lb 13 oz)

### ATTENTION AU COMPOSANT AYANT RAPPORT À LA SÉCURITÉ!

LES COMPOSANTS IDENTIFIÉS PAR UNE TRAME ET UNE MARQUE  SUR LES DIAGRAMMES SCHEMATIQUES, LES VUES EXPLOSÉES ET LA LISTE DES PIÈCES SONT CRITIQUES POUR LA SÉCURITÉ DE FONCTIONNEMENT. NE REMPLACER CES COMPOSANTS QUE PAR DES PIÈCES SONY DONT LES NUMÉROS SONT DONNÉS DANS CE MANUEL OU DANS LES SUPPLÉMENTS PUBLIÉS PAR SONY.

### SAFETY-RELATED COMPONENT WARNING!!

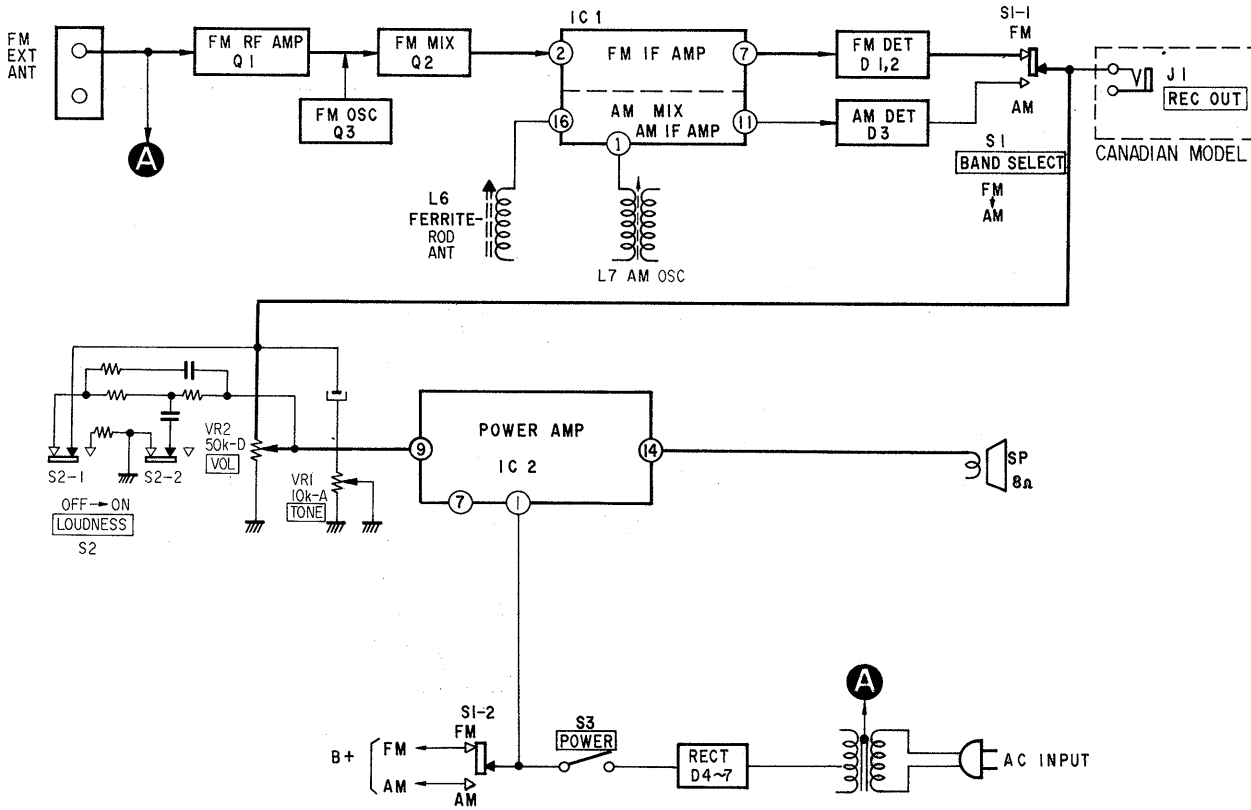
COMPONENTS IDENTIFIED BY SHADING AND MARK  ON THE SCHEMATIC DIAGRAMS, EXPLODED VIEWS AND IN THE PARTS LIST ARE CRITICAL TO SAFE OPERATION. REPLACE THESE COMPONENTS WITH SONY PARTS WHOSE PART NUMBERS APPEAR AS SHOWN IN THIS MANUAL OR IN SUPPLEMENTS PUBLISHED BY SONY.

**SONY**<sup>®</sup>  
**SERVICE MANUAL**



## SECTION 1 OUTLINE

### 1-1. BLOCK DIAGRAM

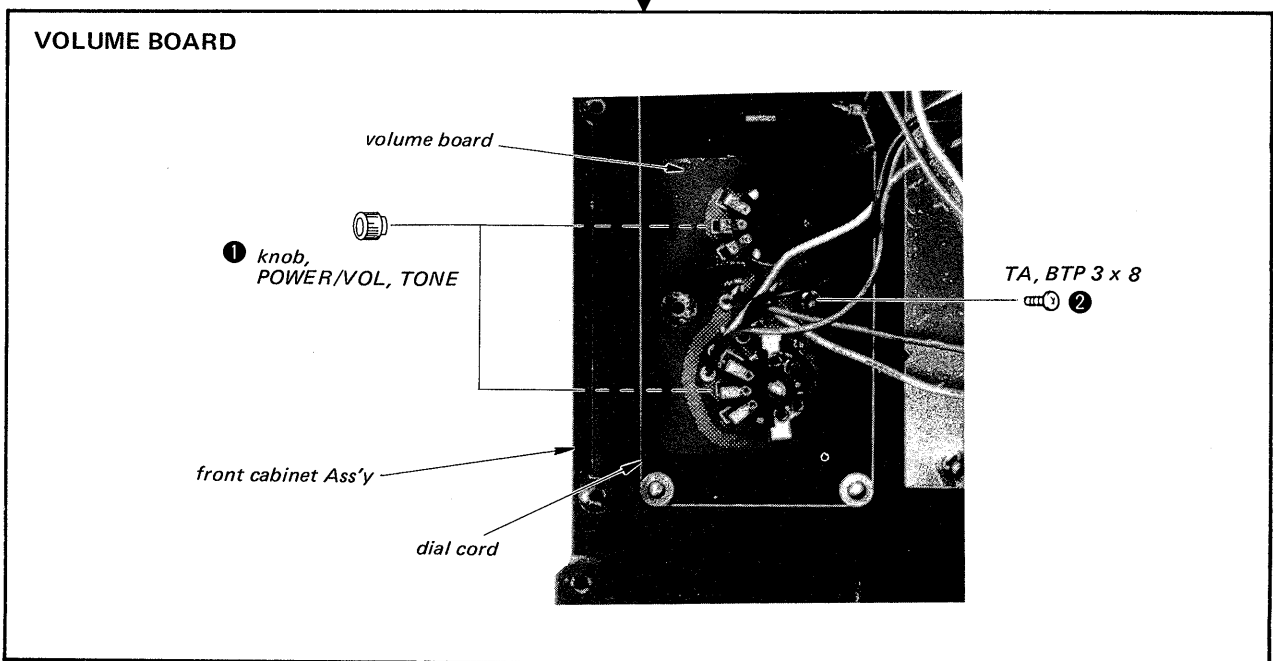
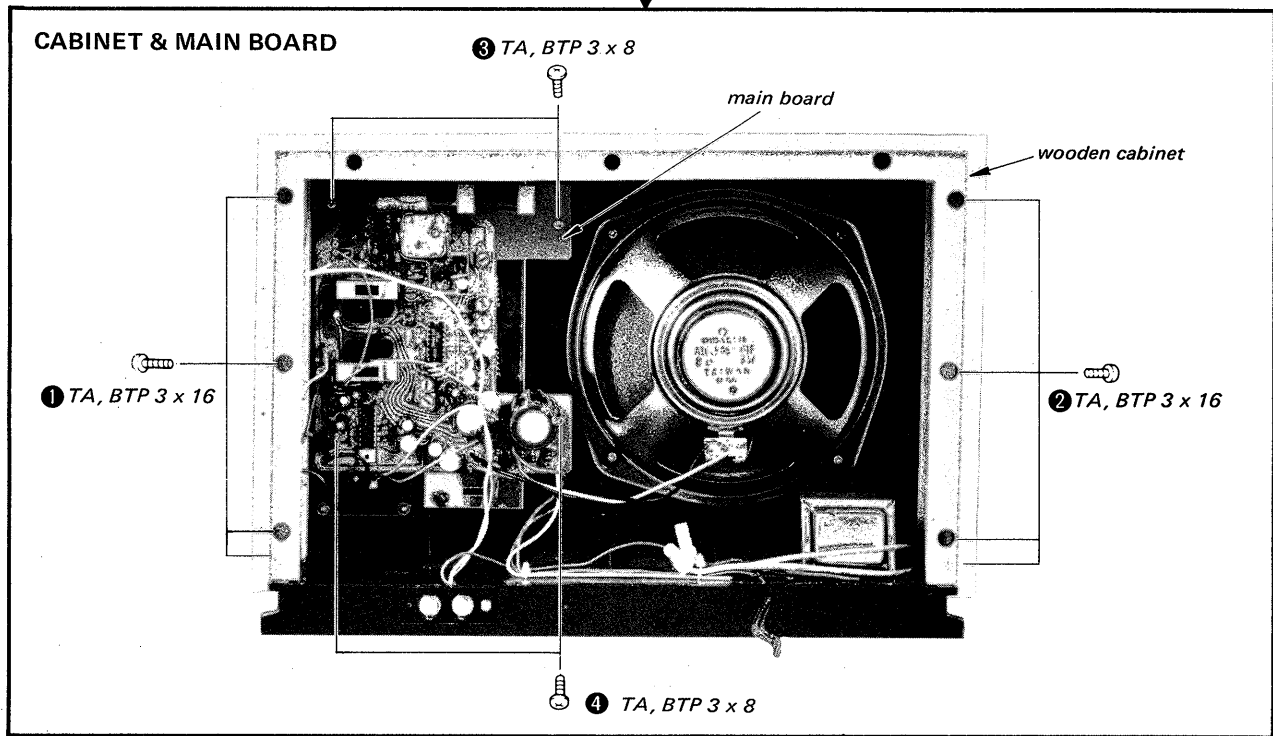


## SECTION 2 DISASSEMBLY

- Follow the disassembly procedure in the numerical order given.

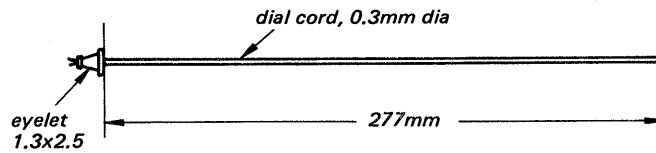
### 2-1. REMOVAL

**REAR PANEL**  
Remove the three screws (TA, BTP3 x 20).

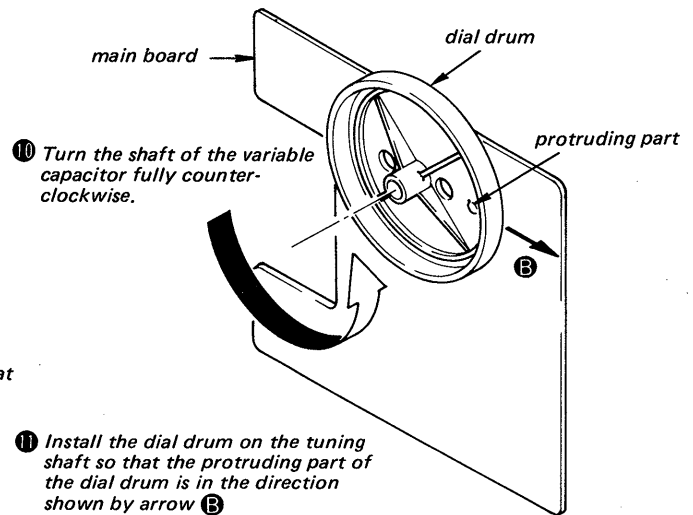
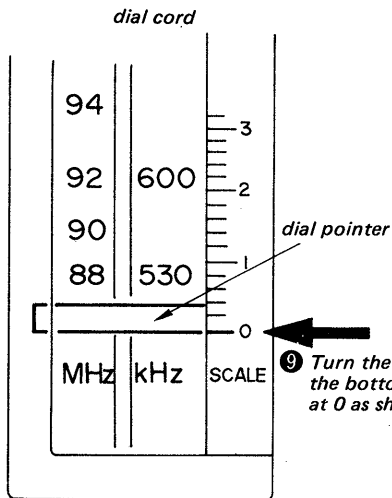
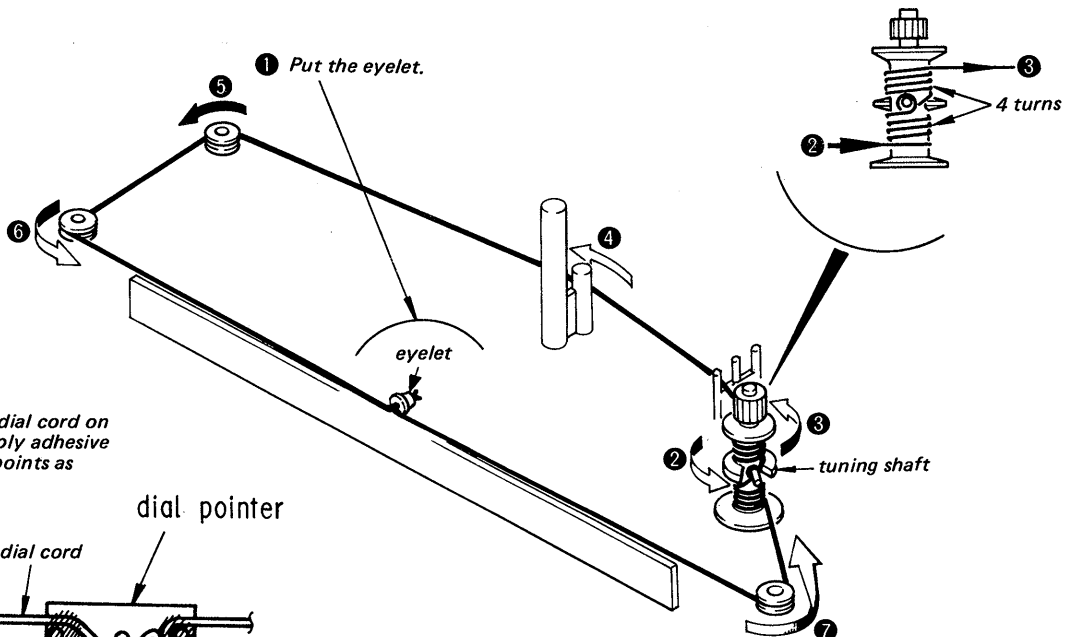


## 2-2. DIAL CORD STRINGING

### (1) Dial Cord Length



### (2) Dial Cord Stringing

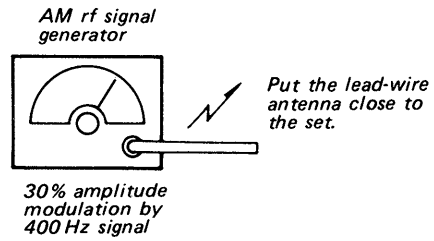


SECTION 3  
ADJUSTMENTS

AM

Setting:

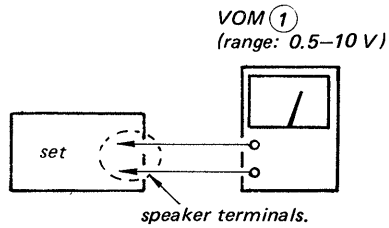
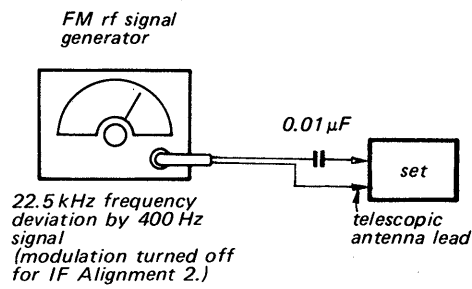
FUNCTION switch: AM



FM

Setting:

FUNCTION switch: FM



- Repeat the procedures in each adjustment several times, and the frequency coverage and tracking adjustments should be finally done by the trimmer capacitors.

FM TRACKING ADJUSTMENT	
Adjust for a maximum reading on VOM ①.	
108.5 MHz	CT-1
87.1 MHz	L2,3

FM FREQUENCY COVERAGE ADJUSTMENT	
Adjust for a maximum reading on VOM ①.	
108.5 MHz	CT-2
87.1 MHz	L5

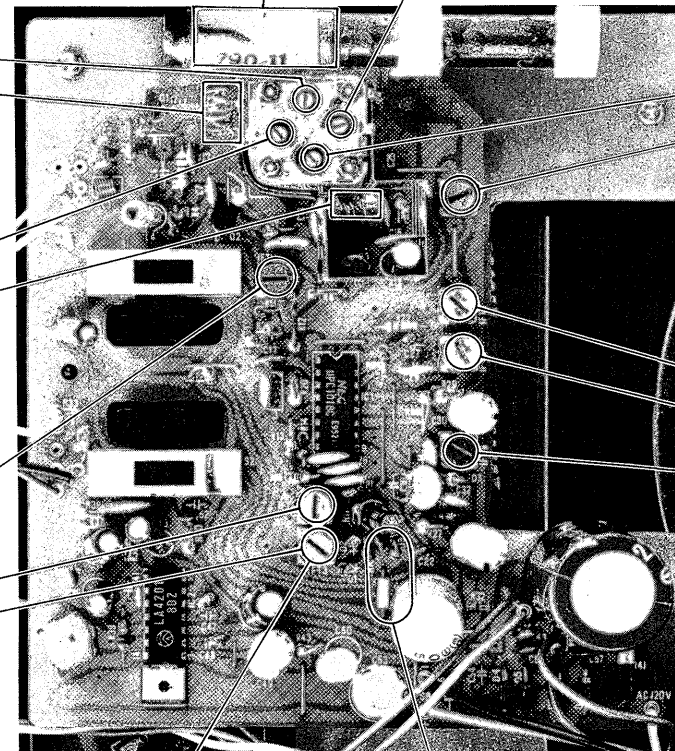
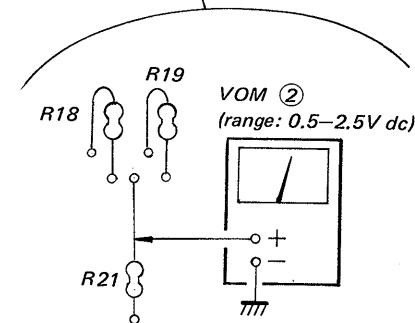
FM IF ALIGNMENT 1 (10.7 MHz with modulation)	
Adjust for maximum reading on VOM ①.	IFT 1
	IFT 2
	IFT 3

AM TRACKING ADJUSTMENT	
Adjust for a maximum reading on VOM ①.	
620 kHz	1,400 kHz
L6	CT-3

AM FREQUENCY COVERAGE ADJUSTMENT	
Adjust for a maximum reading on VOM ①.	
CT-4	1,680 kHz
L7	520 kHz

AM IF ALIGNMENT	
Adjust for a maximum reading on VOM ①.	
IFT 4	455 kHz
IFT 5	
IFT 6	

IFT 3
Adjust for 0V reading on VOM ②.
FM IF ALIGNMENT 2 (10.7 MHz with no modulation)



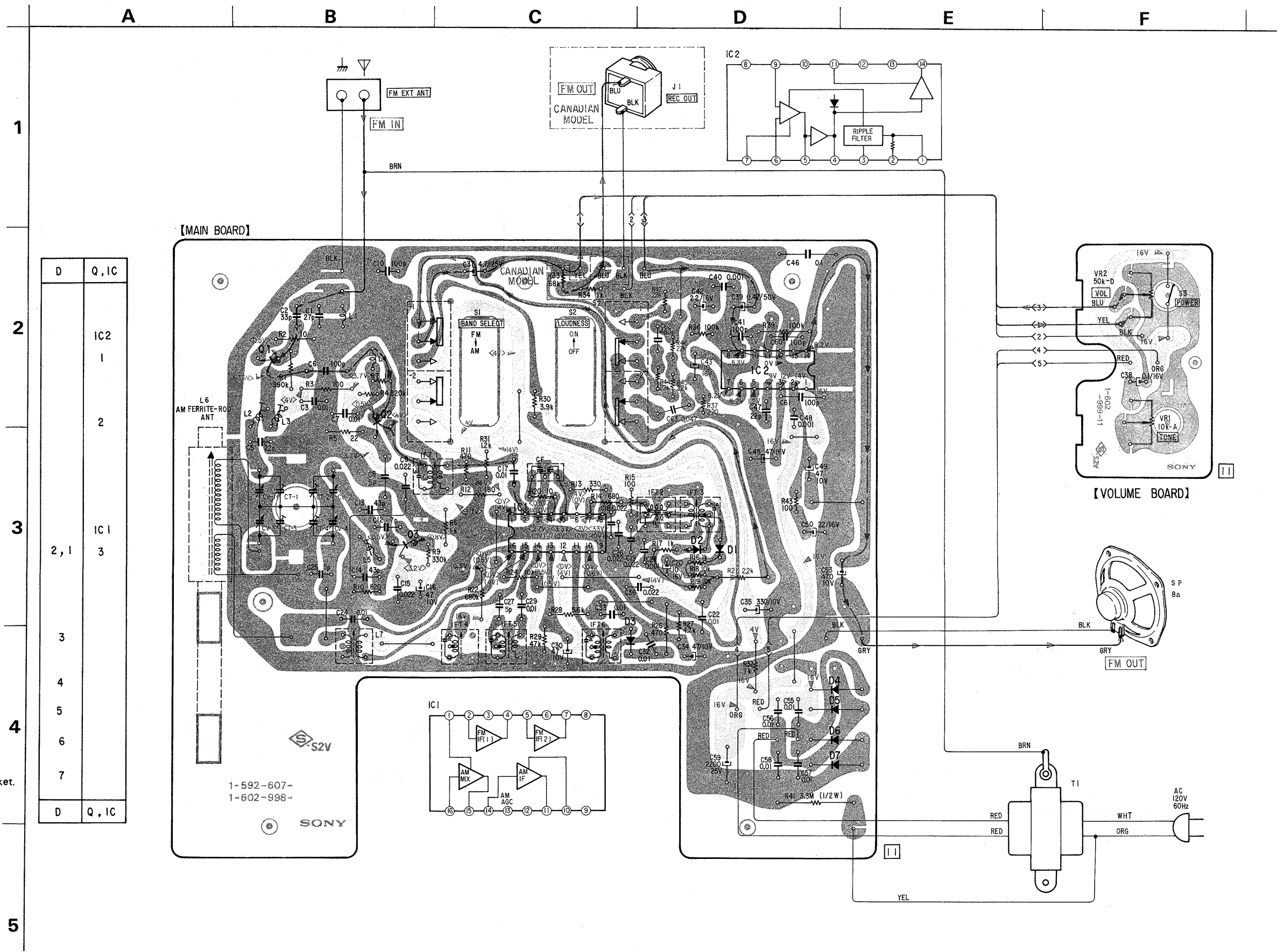
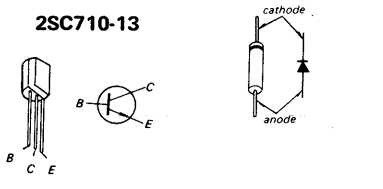
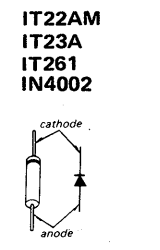
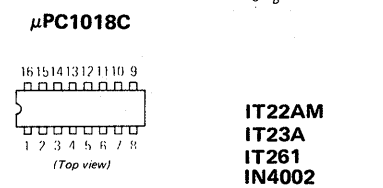
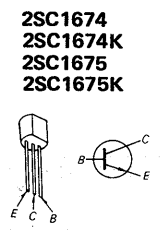
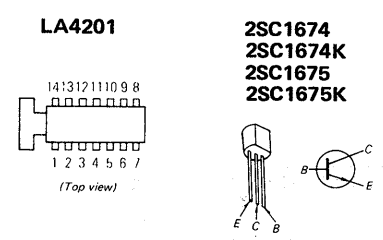
SECTION 4  
DIAGRAMS

追加資料参照

追加資料参照

4-1. MOUNTING DIAGRAM

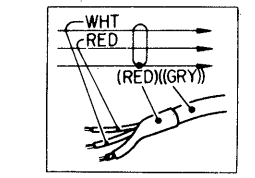
● SEMICONDUCTOR LEAD LAYOUTS



D	Q, IC
	IC2
	1
	2
	IC1
2, 1	3
3	
4	
5	
6	
7	
D	Q, IC

**Note:**

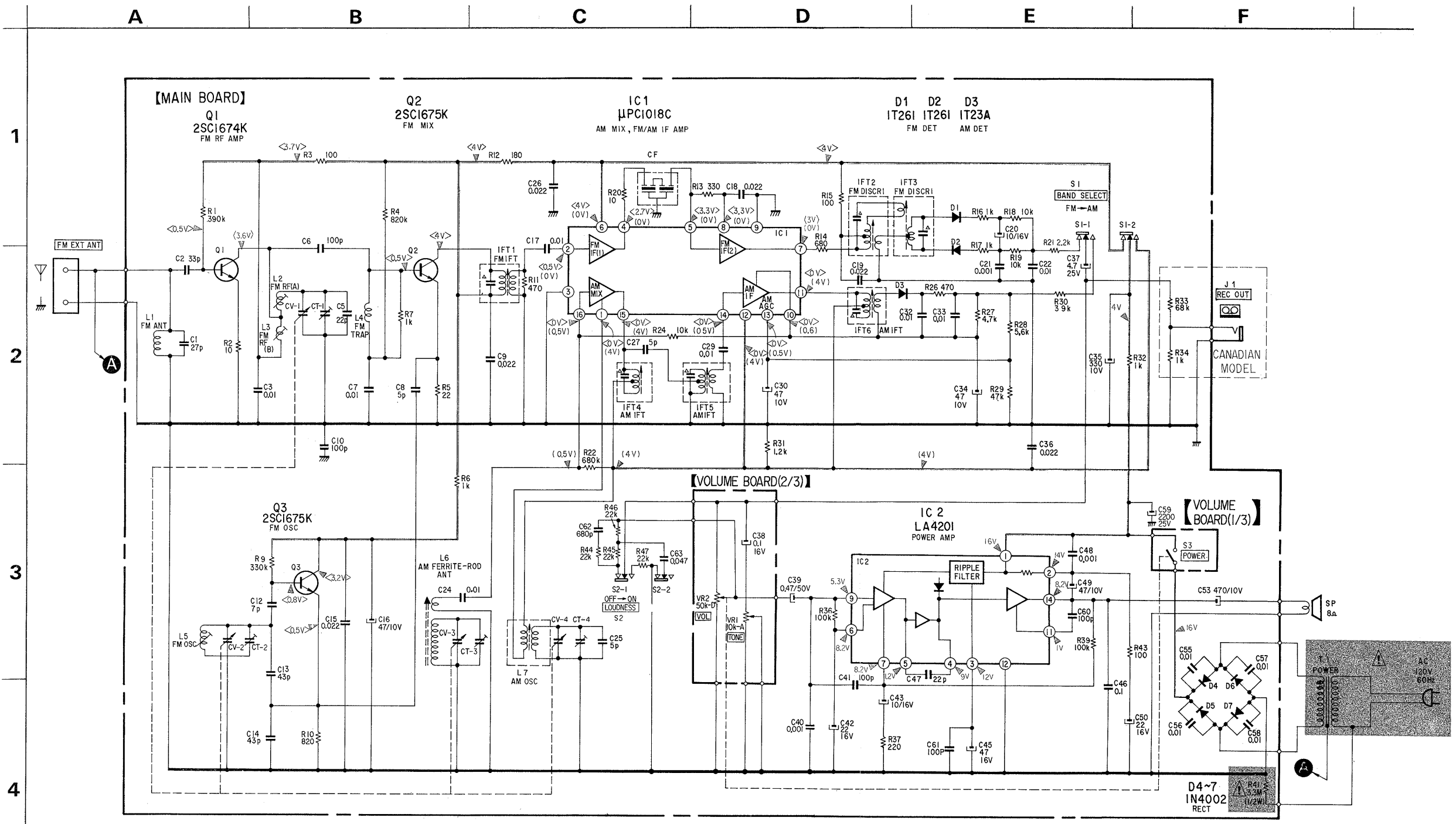
- Color code of sleeving over the end of the jacket.



⊙ : B+ pattern  
⊙ : signal path

追加資料参照

追加資料参照



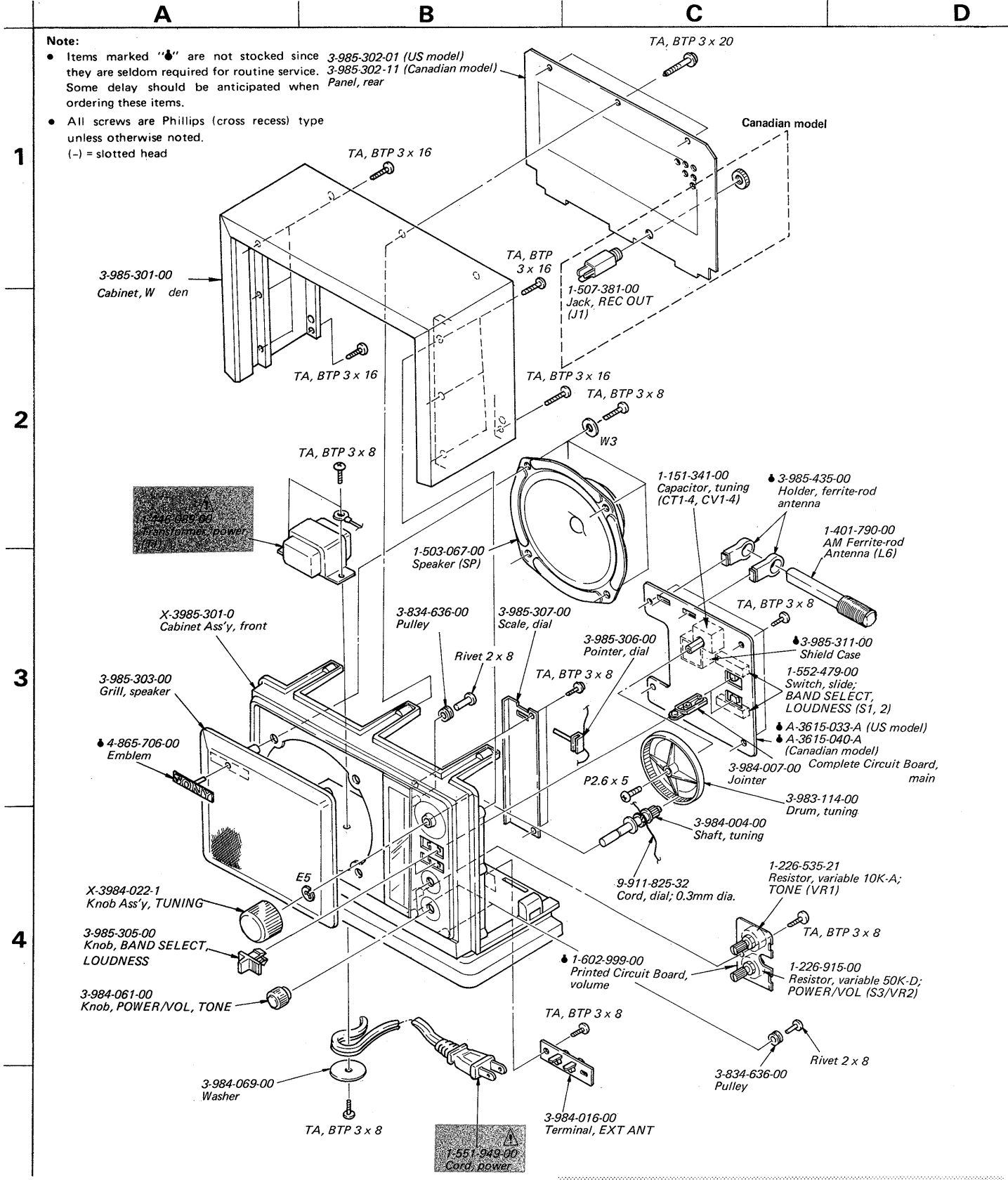
Note: The components identified by shading and mark are critical for safety. Replace only with part number specified.

Note: Les composants identifiés par une trame et une marque sont critiques pour la sécurité. Ne les remplacer que par une pièce portant le numéro spécifié.

- Note:**
- All capacitors are in  $\mu\text{F}$  unless otherwise noted. pF :  $\mu\text{mF}$  50WV or less are not indicated except for electrolytics and tantalums.
  - All resistors are in ohms,  $\frac{1}{4}\text{W}$  unless otherwise noted. k $\Omega$  : 1000  $\Omega$ , M $\Omega$  : 1000 k $\Omega$
  - : B+ bus.
  - : panel designation.
  - Readings are taken under no-signal (detuned) conditions with a VOM (20k $\Omega$ /V).
  - ( ) : AM
  - < > : FM
  - Voltage variations may be noted due to normal production tolerances.

追加資料参照

SECTION 5  
EXPLODED VIEW



Note:

- Items marked "▲" are not stocked since 3-985-302-01 (US model) they are seldom required for routine service. 3-985-302-11 (Canadian model) Some delay should be anticipated when Panel, rear ordering these items.
- All screws are Phillips (cross recess) type unless otherwise noted.  
(-) = slotted head

1

2

3

4

Note: The components identified by shading and mark ▲ are critical for safety. Replace only with part number specified.

Note: Les composants identifiés par une trame et une marque ▲ sont critiques pour la sécurité. Ne les remplacer que par une pièce portant le numéro spécifié.



追加資料参照

SECTION 6  
ELECTRICAL PARTS LIST

Ref. No.	Part No.	Description
<b>SEMICONDUCTORS</b>		
<b>Transistors</b>		
Q1	8-729-167-42	2SC1674
Q2, 3	8-729-671-13	2SC710-13
<b>ICs</b>		
IC1	8-759-110-15	$\mu$ PC1018C
IC2	1-800-661-11	LA4201
<b>Diodes</b>		
D1, 2	8-719-026-11	IT261
D3	8-719-422-21	IT22AM
D4-7	8-719-200-02	10E2
<b>CAPACITORS</b>		
All capacitors are in $\mu$ F and ceramic unless otherwise noted. 50WV or less are not indicated except for electrolytics. elect: electrolytics		
C1	1-102-968-00	27P
C2	1-102-969-00	33P
C3	1-101-923-00	0.01
C5	1-102-967-00	22P
C6	1-102-975-00	100P
C7	1-101-923-00	0.01
C8	1-102-942-00	5P
C9	1-101-924-00	0.022
C10	1-102-975-00	100P
C12	1-102-944-00	7P
C13, 14	1-102-521-00	43P
C15	1-101-924-00	0.022
C16	1-123-306-00	47 10V elect
C17	1-101-923-00	0.01
C18, 19	1-101-924-00	0.022
C20	1-123-316-00	10 16V elect
C21	1-161-026-00	0.001 (semiconductor)
C22	1-161-032-00	0.01 (semiconductor)
C24	1-101-923-00	0.01
C25	1-102-942-00	5P
C26	1-161-034-00	0.022

• Items marked "▲" are not stocked since they are seldom required for routine service. Some delay should be anticipated when ordering these items.

Note: The components identified by shading and mark ▲ are critical for safety. Replace only with part number specified.

Ref. No.	Part No.	Description
C27	1-102-945-00	5P
C29	1-101-923-00	0.01
C30	1-123-306-00	47 10V elect
C32, 33	1-161-032-00	0.01 (semiconductor)
C34	1-123-306-00	47 10V elect
C35	1-123-309-00	330 10V elect
C36	1-161-034-00	0.022 (semiconductor)
C37	1-123-328-00	4.7 25V elect
C38	1-127-019-00	0.1 16V solid aluminum
C39	1-123-351-00	0.47 50V elect
C40	1-161-026-00	0.001 (semiconductor)
C41	1-102-975-00	100P
C42	1-123-317-00	22 16V elect
C43	1-123-316-00	10 16V elect
C45	1-123-319-00	47 16V elect
C46	1-130-528-00	0.1 film
C47	1-102-967-00	22P
C48	1-161-026-00	0.001 (semiconductor)
C49	1-123-306-00	47 10V elect
C50	1-123-317-00	22 16V elect
C53	1-123-310-00	470 10V elect
C55-58	1-101-923-00	0.01
C59	1-123-338-00	2200 25V elect
C60, 61	1-102-975-00	100P
C62	1-102-116-00	680P
C63	1-101-006-00	0.047
CT1-4		Tuning
CV1-4	1-151-341-00	Tuning

**RESISTORS**

Common 1/4W carbon resistor are omitted. Refer to the list on page 14 for their part numbers.

R41	▲ 1-202-725-00	5.3M $\Omega$ 1/4W composition
VR1	1-226-535-21	10k $\Omega$ -A, variable; TONE
VR2	1-226-915-00	50k $\Omega$ -D, variable; VOLUME (including S3; power)

**MISCELLANEOUS**

CF	1-527-795-71	Ceramic Filter, 10.7 MHz
----	--------------	--------------------------

Note: Les composants identifiés par une trame et une marque ▲ sont critiques pour la sécurité. Ne les remplacer que par une pièce portant le numéro spécifié.

追加資料参照

<u>Ref. No.</u>	<u>Part No.</u>	<u>Description</u>
IFT 1	1-403-872-00	FM IFT
IFT 2	1-403-959-00	FM DISCRI
IFT 3	1-403-953-00	FM DSCRI
IFT 4	1-404-288-00	AM IFT
IFT 5	1-404-288-00	AM IFT
IFT 6	1-403-929-00	AM IFT
J1	1-507-381-00	Jack, REC OUT (Canadian model)
L1	● 1-401-228-00	Coil, FM ANT
L2	1-420-956-00	Coil, FM RF (A)
L3	1-420-957-00	Coil, FM RF (B)
L4	1-409-293-00	Coil, FM TRAP
L5	1-420-962-00	Coil, FM OSC
L6	1-401-790-00	AM Ferrite-rod Antenna
L7	1-405-685-00	Coil, AM OSC
S1, 2	1-552-479-00	Switch, slide; BAND SELECT/ LOUDNESS
S3	—————	Switch, Power: included in VR2
SP	1-503-067-00	Speaker
T1	▲ 1-446-089-00	Transformer, Power
	▲ 1-551-949-00	Cord, power

<b>ACCESSORIES &amp; PACKING MATERIALS</b>	
<u>Part No.</u>	<u>Description</u>
3-701-636-00	Bag, polyethylene
3-703-390-01	Instruction (US model)
3-903-184-01	Label, indicating; material (US model)
3-985-312-00	Carton, individual (US model)
3-985-312-11	Carton, individual (Canadian model)
3-985-314-00	Cushion
3-993-230-31	Instruction, French (Canadian model)
3-995-884-21	Manual, instruction

**PRINTED CIRCUIT BOARD**

● 1-602-999-00 Volume

**COMPLETE CIRCUIT BOARD**

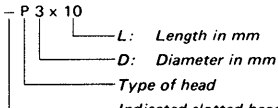
● A-3615-033-A Main (US model)  
● A-3615-040-A Main (Canadian model)

## 1/4 WATT CARBON RESISTORS

Ω	Part No.	Ω	Part No.	Ω	Part No.	Ω	Part No.	Ω	Part No.	Ω	Part No.	Ω	Part No.
1.0	1-246-401-00	10	1-246-425-00	100	1-246-449-00	1.0k	1-246-473-00	10k	1-246-497-00	100k	1-246-521-00	1.0M	1-246-545-00
1.1	1-246-402-00	11	1-246-426-00	110	1-246-450-00	1.1k	1-246-474-00	11k	1-246-498-00	110k	1-246-522-00	1.1M	1-210-814-00
1.2	1-246-403-00	12	1-246-427-00	120	1-246-451-00	1.2k	1-246-475-00	12k	1-246-499-00	120k	1-246-523-00	1.2M	1-210-815-00
1.3	1-246-404-00	13	1-246-428-00	130	1-246-452-00	1.3k	1-246-476-00	13k	1-246-500-00	130k	1-246-524-00	1.3M	1-210-816-00
1.5	1-246-405-00	15	1-246-429-00	150	1-246-453-00	1.5k	1-246-477-00	15k	1-246-501-00	150k	1-246-525-00	1.5M	1-210-817-00
1.6	1-246-406-00	16	1-246-430-00	160	1-246-454-00	1.6k	1-246-478-00	16k	1-246-502-00	160k	1-246-526-00	1.6M	1-210-818-00
1.8	1-246-407-00	18	1-246-431-00	180	1-246-455-00	1.8k	1-246-479-00	18k	1-246-503-00	180k	1-246-527-00	1.8M	1-210-819-00
2.0	1-246-408-00	20	1-246-432-00	200	1-246-456-00	2.0k	1-246-480-00	20k	1-246-504-00	200k	1-246-528-00	2.0M	1-210-820-00
2.2	1-246-409-00	22	1-246-433-00	220	1-246-457-00	2.2k	1-246-481-00	22k	1-246-505-00	220k	1-246-529-00	2.2M	1-210-821-00
2.4	1-246-410-00	24	1-246-434-00	240	1-246-458-00	2.4k	1-246-482-00	24k	1-246-506-00	240k	1-246-530-00	2.4M	1-244-754-00
2.7	1-246-411-00	27	1-246-435-00	270	1-246-459-00	2.7k	1-246-483-00	27k	1-246-507-00	270k	1-246-531-00	2.7M	1-244-755-00
3.0	1-246-412-00	30	1-246-436-00	300	1-246-460-00	3.0k	1-246-484-00	30k	1-246-508-00	300k	1-246-532-00	3.0M	1-244-756-00
3.3	1-246-413-00	33	1-246-437-00	330	1-246-461-00	3.3k	1-246-485-00	33k	1-246-509-00	330k	1-246-533-00	3.3M	1-244-757-00
3.6	1-246-414-00	36	1-246-438-00	360	1-246-462-00	3.6k	1-246-486-00	36k	1-246-510-00	360k	1-246-534-00	3.6M	1-244-758-00
3.9	1-246-415-00	39	1-246-439-00	390	1-246-463-00	3.9k	1-246-487-00	39k	1-246-511-00	390k	1-246-535-00	3.9M	1-244-759-00
4.3	1-246-416-00	43	1-246-440-00	430	1-246-464-00	4.3k	1-246-488-00	43k	1-246-512-00	430k	1-246-536-00	4.3M	1-244-760-00
4.7	1-246-417-00	47	1-246-441-00	470	1-246-465-00	4.7k	1-246-489-00	47k	1-246-513-00	470k	1-246-537-00	4.7M	1-244-761-00
5.1	1-246-418-00	51	1-246-442-00	510	1-246-466-00	5.1k	1-246-490-00	51k	1-246-514-00	510k	1-246-538-00	5.1M	1-244-762-00
5.6	1-246-419-00	56	1-246-443-00	560	1-246-467-00	5.6k	1-246-491-00	56k	1-246-515-00	560k	1-246-539-00		
6.2	1-246-420-00	62	1-246-444-00	620	1-246-468-00	6.2k	1-246-492-00	62k	1-246-516-00	620k	1-246-540-00		
6.8	1-246-421-00	68	1-246-445-00	680	1-246-469-00	6.8k	1-246-493-00	68k	1-246-517-00	680k	1-246-541-00		
7.5	1-246-422-00	75	1-246-446-00	750	1-246-470-00	7.5k	1-246-494-00	75k	1-246-518-00	750k	1-246-542-00		
8.2	1-246-423-00	82	1-246-447-00	820	1-246-471-00	8.2k	1-246-495-00	82k	1-246-519-00	820k	1-246-543-00		
9.1	1-246-424-00	91	1-246-448-00	910	1-246-472-00	9.1k	1-246-496-00	91k	1-246-520-00	910k	1-246-544-00		

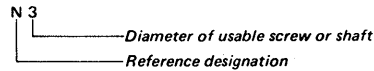
## HARDWARE NOMENCLATURE

Screw:



Unless otherwise indicated, it means cross-recessed head (Phillips type).

Nut, Washer, Retaining ring:



Reference Designation	Shape	Description	Remarks
<b>SCREWS</b>			
P		pan-head screw	binding-head (B) screw for replacement
PWH		pan-head screw with washer face	binding-head (B) screw and flat washer for replacement
PS PSP		pan-head screw with spring washer	binding-head (B) screw and spring washer for replacement
PSW PSPW		pan-head screw with spring and flat washers	binding-head (B) screw and spring and flat washers for replacement
R		round-head screw	binding-head (B) screw for replacement
K		flat-countersunk-head screw	
RK		oval-countersunk-head screw	
B		binding-head screw	
T		truss-head screw	binding-head (B) screw for replacement
F		flat-fillister-head screw	
RF		fillister-head screw	
BV		braizer-head screw	

Reference Designation	Shape	Description	Remarks
<b>SELF-TAPPING SCREWS</b>			
TA		self-tapping screw	ex: TA, P 3 x 10
PTP		pan-head self-tapping screw	binding-head self-tapping (TA, B) screw for replacement
PTPWH		pan-head self-tapping screw with washer face	binding-head self-tapping (TA, B) screw and flat washer for replacement
PTTWH		pan-head thread-rolling screw with washer face	binding-head (B) screw and flat washer for replacement
<b>SET SCREWS</b>			
SC		set screw	
SC		hexagon-socket set screw	ex: SC 2.6 x 4, hexagon socket
<b>NUT</b>			
N		nut	
<b>WASHERS</b>			
W		flat washer	
SW		spring washer	
LW		internal-tooth lock washer	ex: LW3, internal
LW		external-tooth lock washer	ex: LW3, external
<b>RETAINING RINGS</b>			
E		retaining ring	
G		grip-type retaining ring	

Sony Corporation

© 1981

- 14 -

## SUPPLEMENT

File this supplement with the service manual.

### SAFETY CHECK-OUT (US Model)

After correcting the original service problem, perform the following safety check before releasing the set to the customer:

Check the antenna terminals, metal trim, "metallized" knobs, screws, and all other exposed metal parts for AC leakage. Check leakage as described below.

#### LEAKAGE TEST

The AC leakage from any exposed metal part to earth ground and from all exposed metal parts to any exposed metal part having a return to chassis, must not exceed 0.5 mA (500 microamperes). Leakage current can be measured by any one of three methods.

1. A commercial leakage tester, such as the Simpson 229 or RCA WT-540A. Follow the manufacturers' instructions to use these instruments.
2. A battery-operated AC milliammeter. The Data Precision 245 digital multimeter is suitable for this job.
3. Measuring the voltage drop across a resistor by means of a VOM or battery-operated AC voltmeter. The "limit" indication is 0.75 V, so analog meters must have an accurate low-voltage scale. The Simpson 250 and Sanwa SH-63Trd are examples of a passive VOM that is suitable. Nearly all battery operated digital multimeters that have a 2 V AC range are suitable. (See Fig. A)

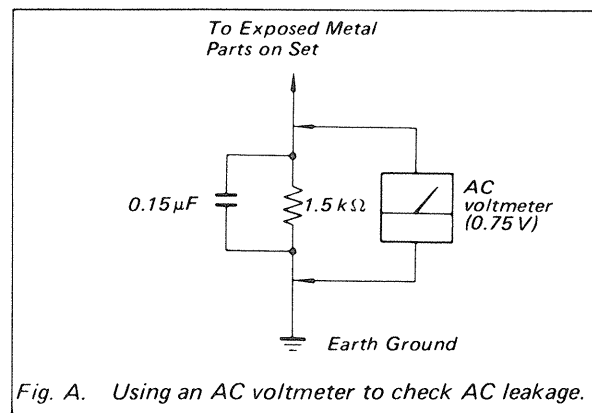


Fig. A. Using an AC voltmeter to check AC leakage.

**SONY**  
SERVICE MANUAL

# ICF-9740W

## SONY<sup>®</sup> SERVICE MANUAL

*US Model  
Canadian Model*

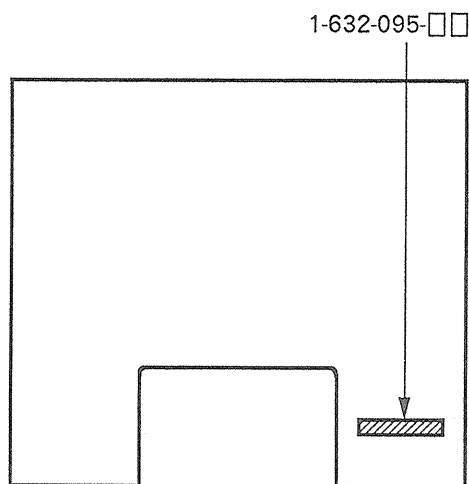
### SUPPLEMENT-2

File this Supplement with the Service Manual.

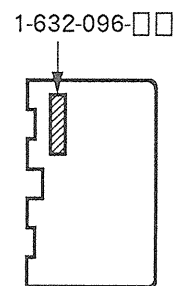
Subject : PC boards change

- Printed wiring boards and schematic diagram have been changed. According to this, electrical parts and etc. have also been changed.
- New type is distinguished from former type by part number suffix printed on PC boards.

RADIO BOARD



VOLUME BOARD

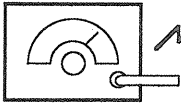


# 1. ELECTRICAL ADJUSTMENTS

## AM

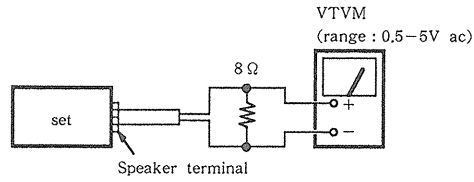
BAND SELECT switch : AM

AM rf signal generator



Put the lead-wire antenna close to the set.

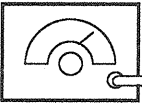
30% amplitude modulation by 400Hz signal



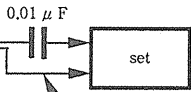
## FM

BAND SELECT switch : FM

FM rf signal generator



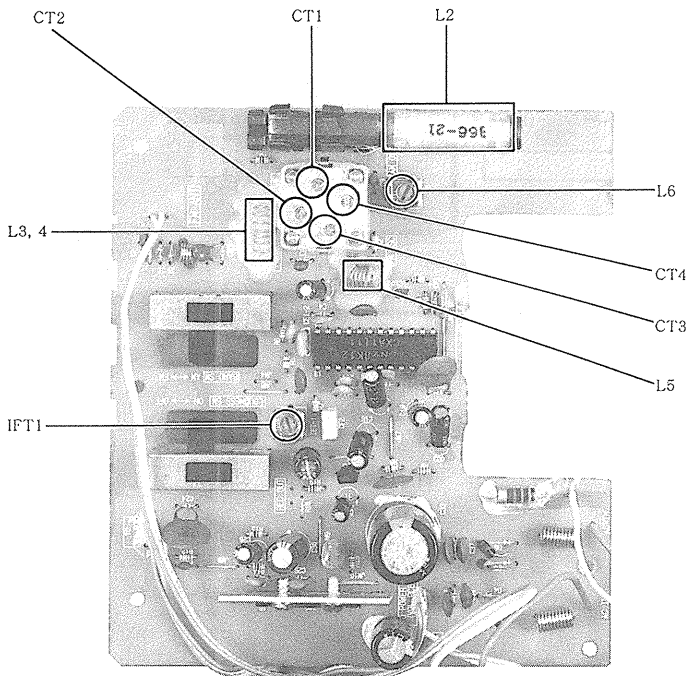
22.5kHz frequency deviation by 400Hz signal



FM EXT ANT terminal

Repeat the procedures in each adjustment several times, and the frequency coverage and tracking adjustments should be finally done by the trimmer capacitors.

Adjustment Location : radio board



FM FREQUENCY COVERAGE ADJUSTMENT	
Adjust for a maximum reading on VTVM.	
L5	CT3
86.5MHz	109.5MHz

FM TRACKING ADJUSTMENT	
Adjust for a maximum reading on VTVM.	
L3, 4	CT2
86.5MHz	109.5MHz

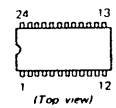
AM FREQUENCY COVERAGE ADJUSTMENT	
Adjust for a maximum reading on VTVM.	
L6	CT4
520kHz	1,680kHz

AM TRACKING ADJUSTMENT	
Adjust for a maximum reading on VTVM.	
L2	CT1
600kHz	1,400kHz

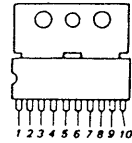
AM IF ADJUSTMENT	
Adjust for a maximum reading on VTVM.	
IFT1	
455kHz	

• SEMICONDUCTOR LEAD LAYOUTS

CXA1111P



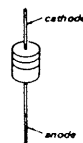
LA4265



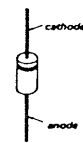
2SC945-P



1SS119

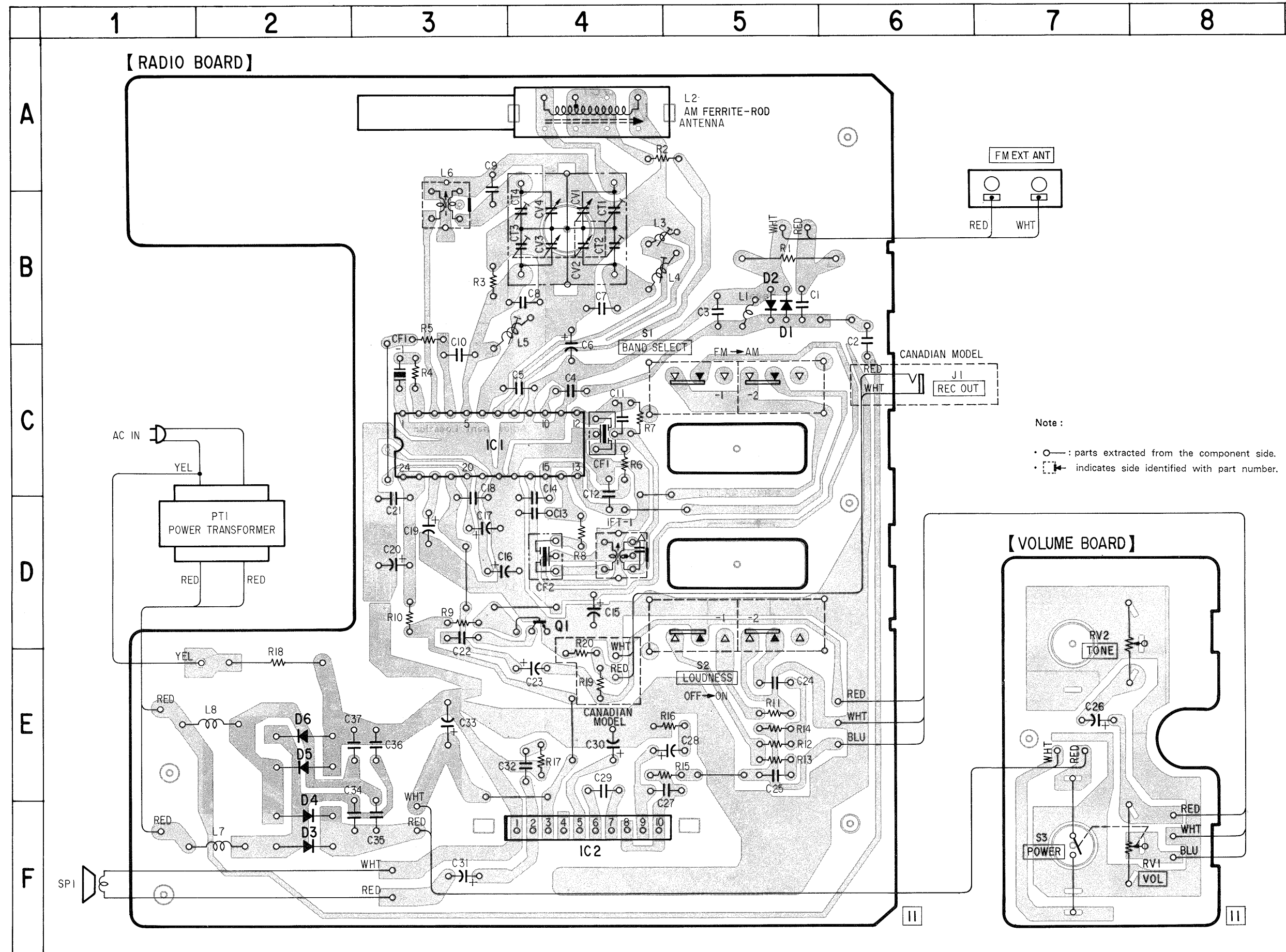


10E2

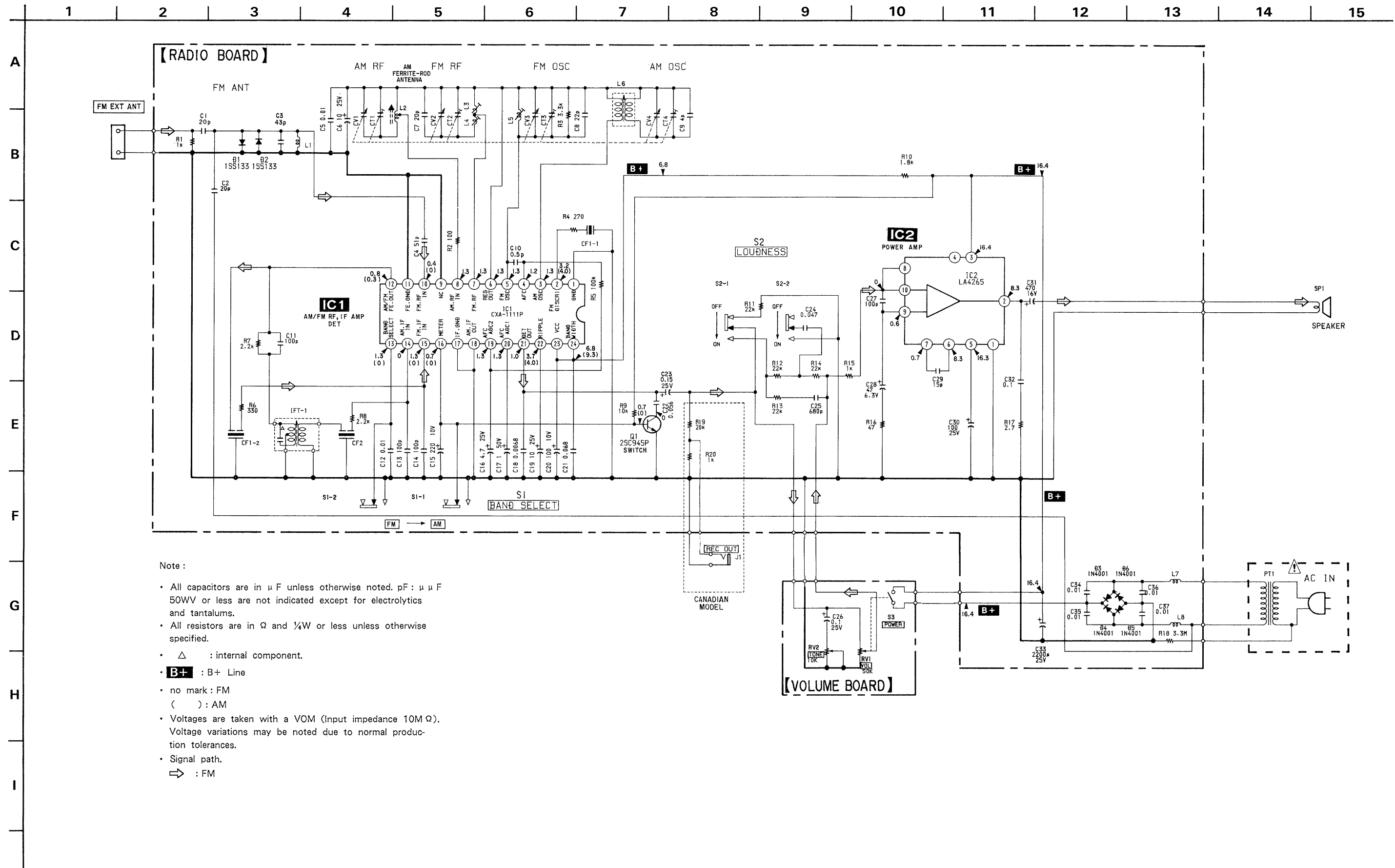


Ref. No.	Location
IC1	C-3
IC2	F-4
Q1	D-4
D1	B-5
D2	B-5
D3	F-2
D4	F-2
D5	E-2
D6	E-2

2. PRINTED WIRING BOARDS



3. SCHEMATIC DIAGRAM





#### 4. EXPLODED VIEW

**NOTE:**

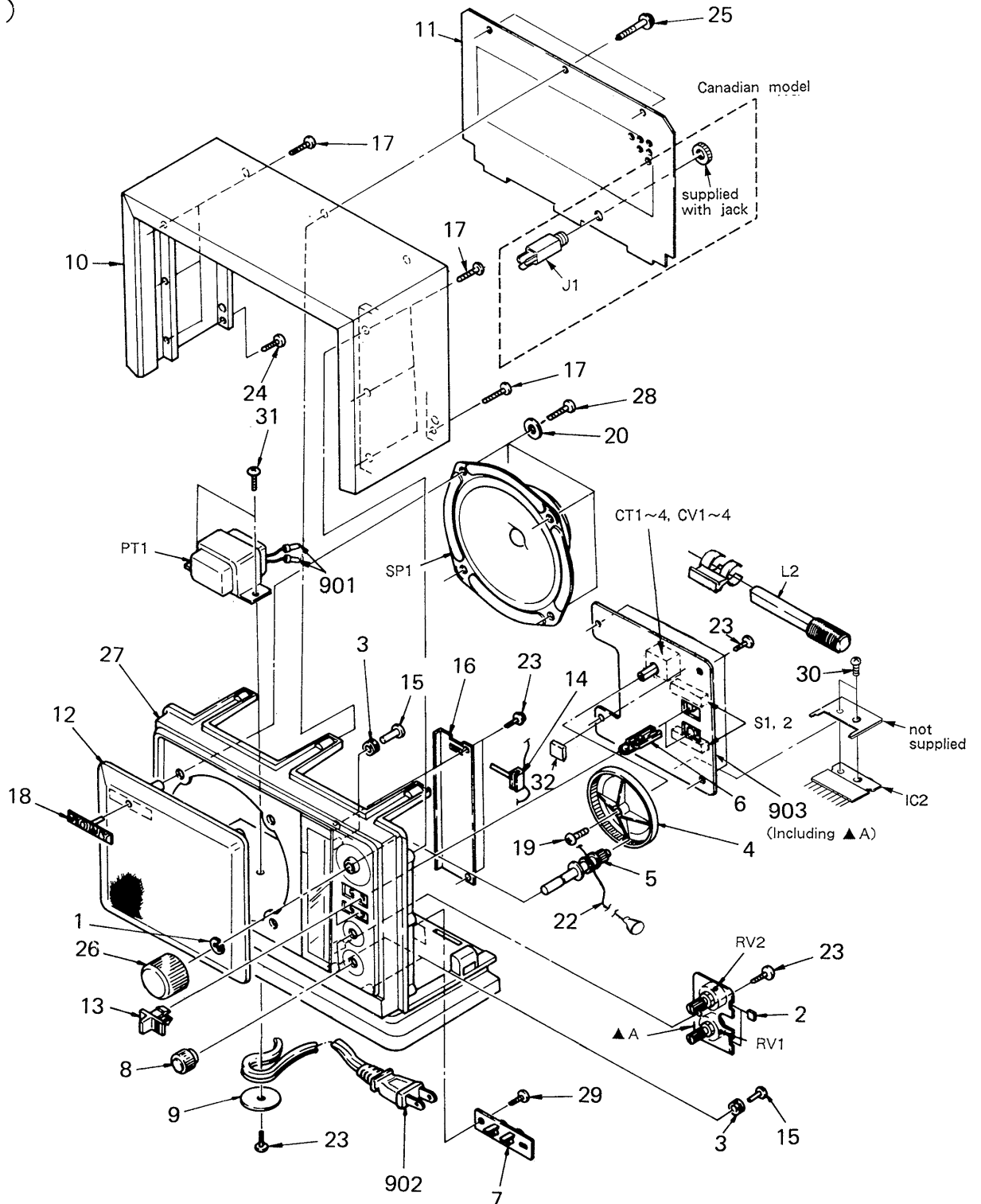
- The mechanical parts with no reference number in the exploded views are not supplied.
- The construction parts of an assembled part are indicated with a collation number in the remark column.
- Items marked "★" are not stocked since they are seldom required for routine service. Some delay should be anticipated when ordering these items.

- Due to standardization, parts with part number suffix -XX and -X may be different from the parts specified in the components used on the set.
- Color Indication of Appearance Parts Example:  
(RED) ... KNOB, BALANCE (WHITE)  
↑ Cabinet's Color                      ↑ Parts' Color

The components identified by mark ▲ or dotted line with mark ▲ are critical for safety. Replace only with part number specified.

Les composants identifiés par une marque ▲ sont critiques pour la sécurité. Ne les remplacer que par une pièce portant le numéro spécifié.

(1)



<u>No.</u>	<u>Part No.</u>	<u>Description</u>	<u>Remarks</u>	<u>No.</u>	<u>Part No.</u>	<u>Description</u>	<u>Remarks</u>
1	3-638-493-00	RING, RETAINING, CE		16	3-985-325-01	SCALE (BLOCK COPY), DIAL	
2	3-831-441-XX	CUSHION (t=0.5)		17	7-685-550-11	SCREW +BTP 3X16 TYPE2 N-S	
3	3-834-636-00	PULLEY		18	*4-865-706-00	EMBLEM, SONY	
4	3-983-114-00	DRUM, DIAL		19	7-621-770-87	SCREW +P 2.6X5	
5	3-984-004-00	SHAFT, TUNING					
6	3-984-007-00	JOINTER		20	7-623-108-21	W 3, LARGE	
7	3-984-016-00	PLATE, TERMINAL, 2P		22	9-911-825-32	CORD, DIAL (0.3MM DIA)	
8	3-984-061-00	KNOB, CONTROL (POWER/VOL,TONE)		23	7-685-546-11	SCREW +BTP 3X8 TYPE2 N-S	
9	3-984-069-00	STOPPER, CORD		24	7-685-550-14	SCREW +BTP 3X16 TYPE2 N-S	
10	3-985-301-00	CABINET, UPPER		25	7-685-651-79	SCREW +BTP 3X20 TYPE2 N-S	
11	3-985-302-01	(US).....LID, REAR		26	X-3984-022-1	KNOB ASSY (TUNING)	
	3-985-302-11	(Canadian)...LID, REAR		27	X-3985-301-0	CABINET ASSY, FRONT	
				28	7-685-647-79	SCREW +P 3X10 TYPE2 SLIT	
12	3-985-303-00	GRILLE, SPEAKER		29	7-685-647-79	SCREW +BTP 3X10 TYPE2 N-S	
13	3-985-305-00	KNOB, SWITCH (BAND SELECT,LOUDNESS)		30	7-682-546-04	SCREW +PTT 3X5 (S)	
14	3-985-306-00	POINTER		31	7-685-547-11	SCREW +BTP 3X10 TYPE2 N-S	
15	7-625-713-00	RIVET 2X8		32	9-911-852-XX	CUSHION, CIRCUIT BOARD (t=5)	

5. ELECTRICAL PARTS LIST

NOTE:

- Due to standardization, replacements in the parts list may be different from the parts specified in the diagrams or the components used on the set.
- Items marked "★" are not stocked since they are seldom required for routine service. Some delay should be anticipated when ordering these items.
- If there are two or more same circuits in a set such as a stereophonic machine, only typical circuit parts may be indicated and capacitors and resistors in other same circuits may be omitted.

CAPACITORS:

MF:  $\mu$ F, PF:  $\mu$  $\mu$ F.

RESISTORS

- All resistors are in ohms.
- F: nonflammable

COILS

- MMH: mH, UH:  $\mu$ H

SEMICONDUCTORS

In each case, U:  $\mu$ , for example:

UA...:  $\mu$ A..., UPA...:  $\mu$ PA...,  
 UPC...:  $\mu$ PC, UPD...:  $\mu$ PD...

The components identified by mark  $\Delta$  or dotted line with mark  $\Delta$  are critical for safety. Replace only with part number specified.

Les composants identifiés par une marque  $\Delta$  sont critiques pour la sécurité. Ne les remplacer que par une pièce portant le numéro spécifié.

Ref.No.	Part No.	Description
901	1-535-506-00	CONNECTION PRESS TERMINAL
902	$\Delta$ 1-551-506-XX $\Delta$ 1-558-566-21	(US).....CORD, POWER (Canadian)...CORD, POWER
903	*A-3615-315-A *A-3615-316-A	(US).....PC BOARD ASSY, MAIN (Canadian)...PC BOARD ASSY, MAIN
C1	1-102-958-00	CERAMIC 20PF 5% 50V
C2	1-102-958-00	CERAMIC 20PF 5% 50V
C3	1-102-966-00	CERAMIC 43PF 5% 50V
C4	1-101-882-00	CERAMIC 51PF 5% 50V
C5	1-101-004-00	CERAMIC 0.01MF 50V
C6	1-123-356-00	ELECT 10MF 20% 25V
C7	1-102-958-00	CERAMIC 20PF 5% 50V
C8	1-102-959-00	CERAMIC 22PF 5% 50V
C9	1-102-937-00	CERAMIC 4PF 0.25PF 50V
C10	1-101-837-00	CERAMIC 0.5PF 0.25PF 50V
C11	1-102-106-00	CERAMIC 100PF 10% 50V
C12	1-101-004-00	CERAMIC 0.01MF 50V
C13	1-102-973-00	CERAMIC 100PF 5% 50V
C14	1-102-973-00	CERAMIC 100PF 5% 50V
C15	1-126-335-11	ELECT 220MF 20% 10V
C16	1-123-369-00	ELECT 4.7MF 20% 25V
C17	1-123-380-00	ELECT 1MF 20% 50V
C18	1-161-049-00	CERAMIC 0.0068MF 10% 25V
C19	1-123-356-00	ELECT 10MF 20% 25V
C20	1-126-101-11	ELECT 100MF 20% 10V
C21	1-161-061-11	CERAMIC 0.068MF 10% 25V
C22	1-161-060-00	CERAMIC 0.056MF 10% 25V
C23	1-131-342-00	ELECT(SOLID) 0.15MF 20% 25V
C24	1-101-006-00	CERAMIC 0.047MF 50V
C25	1-102-116-00	CERAMIC 680PF 10% 50V
C26	1-131-402-00	ELECT(SOLID) 0.1MF 20% 25V
C27	1-102-973-00	CERAMIC 100PF 5% 50V
C28	1-123-306-00	ELECT 47MF 20% 6.3V
C29	1-102-951-00	CERAMIC 15PF 5% 50V
C30	1-123-333-00	ELECT 100MF 20% 25V
C31	1-126-103-11	ELECT 470MF 20% 16V
C32	1-130-495-00	MYLAR 0.1MF 5% 50V
C33	1-124-563-11	ELECT 2200MF 20% 25V
C34	1-101-004-00	CERAMIC 0.01MF 50V
C35	1-101-004-00	CERAMIC 0.01MF 50V
C36	1-101-004-00	CERAMIC 0.01MF 50V
C37	1-101-004-00	CERAMIC 0.01MF 50V
CF1	1-567-734-71	FILTER, CERAMIC
CF2	1-577-072-11	FILTER, CERAMIC

Ref.No.	Part No.	Description
CT1-4 CV1-4	1-151-478-11	CAP, TUNING, POLYETHYLENE
D1	8-719-911-19	DIODE 1SS119
D2	8-719-911-19	DIODE 1SS119
D3	8-719-200-02	DIODE 10E2
D4	8-719-200-02	DIODE 10E2
D5	8-719-200-02	DIODE 10E2
D6	8-719-200-02	DIODE 10E2
IC1	8-752-030-95	IC CXA1111P
IC2	8-759-805-31	IC LA4265
IFT1	1-404-790-11	TRANSFORMER, IF
J1	1-507-381-21	(Canadian)...MOLD TYPE JACK (REC OUT)
L1	1-402-471-11	COIL (ANT)
L2	1-402-366-21	ANTENNA, FERRITE-ROD (MW)
L3	1-426-446-11	COIL (RF)
L4	1-426-461-11	COIL (RF)
L5	*1-422-130-00	COIL, FM OSC
L6	1-406-028-00	COIL, OSC (MW)
L7	*1-422-229-11	COIL, AIR-CORE
L8	*1-422-229-11	COIL, AIR-CORE
PT1	$\Delta$ 1-446-089-00	TRANSFORMER, POWER
Q1	8-729-194-57	TRANSISTOR 2SC945-P
R1	1-202-818-00	SOLID 1K 10% 1/2W
R2	1-249-405-11	CARBON 100 5% 1/4W
R3	1-249-423-11	CARBON 3.3K 5% 1/4W
R4	1-249-410-11	CARBON 270 5% 1/4W
R5	1-249-441-11	CARBON 100K 5% 1/4W
R6	1-249-411-11	CARBON 330 5% 1/4W
R7	1-249-421-11	CARBON 2.2K 5% 1/4W
R8	1-249-421-11	CARBON 2.2K 5% 1/4W
R9	1-249-429-11	CARBON 10K 5% 1/4W
R10	1-249-420-11	CARBON 1.8K 5% 1/4W
R11	1-249-433-11	CARBON 22K 5% 1/4W
R12	1-249-433-11	CARBON 22K 5% 1/4W
R13	1-249-433-11	CARBON 22K 5% 1/4W
R14	1-249-433-11	CARBON 22K 5% 1/4W
R15	1-249-417-11	CARBON 1K 5% 1/4W
R16	1-249-401-11	CARBON 47 5% 1/4W
R17	1-249-386-11	CARBON 2.7 5% 1/4W
R18	1-202-725-00	SOLID 3.3M 10% 1/2W
R19	1-247-862-11	(Canadian)...CARBON 20K 5% 1/4W
R20	1-249-417-11	(Canadian)...CARBON 1K 5% 1/4W

<u>Ref.No.</u>	<u>Part No.</u>	<u>Description</u>
RV1	1-226-915-00	RES, VAR, CARBON (WITH SW) 50K (POWER/VOL)
RV2	1-226-535-21	RES, VAR, CARBON 10K (TONE)
S1	1-553-656-00	SWITCH, SLIDE (BAND SELECT)
S2	1-553-656-00	SWITCH, SLIDE (LOUDNESS)
SP1	1-503-067-00	SPEAKER

ACCESSORY & PACKING MATERIAL

*3-985-312-01	(US).....INDIVIDUAL CARTON
*3-985-312-11	(Canadian)...INDIVIDUAL CARTON
*3-985-314-01	CUSHION
3-995-884-21	MANUAL, INSTRUCTION